



5. INDUSTRIAL FABRICATION & MAINTENANCE



This is one of the areas in the industrial world that has a big variety of career paths in Mechanical Engineering. This specialty deals with the production and various transformations of iron works in a variety of sectors.

There are a variety of tasks that trades persons in this sector carry out on a daily basis to ensure a simulating work environment where there is high expectation of technical expertise and methodical work practice inter-related with each other to ensure perfect security and safety.

Training in this sector varies from 9 months to 24 months and even more; in addition to specific certifications demanded in some of the trades.

Specializations here include :

- *Simply Act Welding - Fitter and Machinist (Metal Fabrication - Sheet Metalist - Industrial Welding - Scaffolding - Pipe liners/-fitters - Industrial Welding - Pipe Coating (Anti Corrosion Specialists) - Aluminum and Glasswork*

Specialist in this sector are in very high demand in various area in the industrial sector... metallic construction, ship maintenance, industrial painting, pipe lining for oil/gas distribution etc.

6. ELECTRICAL INSTALLATION /ELECTRONICS



This is a trade area that permit trainees to acquire skills that permit them to carry out wiring of structures to operate automatically with the use of electricity as well as carry out efficiently the installation of electrical equipments and electronics.

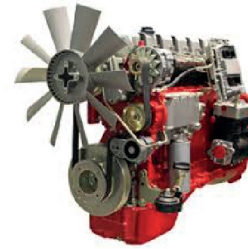
Training period can run from 12 months to 24 months depending on the entry level and also the level of specialization required.

Arrears of specialization in this sector include :

- *Home/Domestic electrification - Electrical Maintenance of Machinery - Electronics (Installation and repairs of electronics equipments) - Electrification Technique*

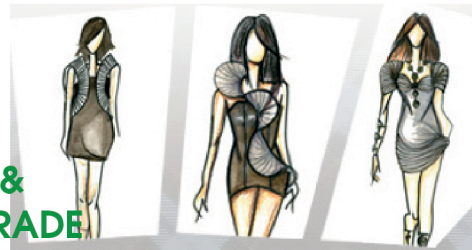
7. MOTOR MECHANICS

This a trade that is concerned with the diagnoses of faults in a car, general maintenance of cars and repairs of cars. Trainees in this sector are drilled with all the necessary skills and machinery necessary to enter the Motor Vehicle Industry. Trainees at the end of their studies will be able to dictate faults in both manual and automatic cars, repair them and carry out regular maintenance to improve the operating capacity of the cars.



- *Automotive Technicians**
- *Car diagnostic specialists*
- *Cars Body repairs and paint Specialist*
- *Cars diagnosis specialist etc*

Training here can run from 12 months to 36 months or more depending on the entry level and the trade specialization needed.



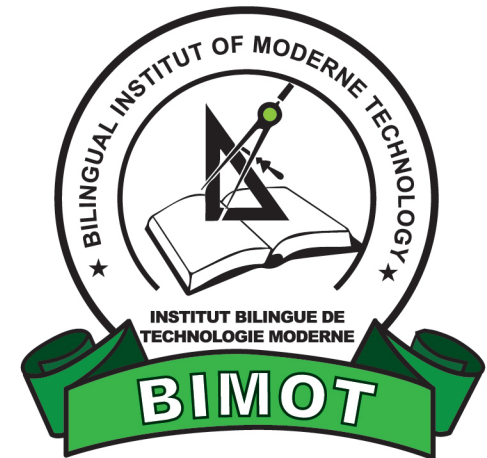
8. FASHION & DESIGN TRADE

This trade drills the trainees into the courses that cover the art of designing beautiful clothing and fashion accessories. The skills acquired here enables the trainee to bring out a variety of designs for clothing for varied events... weddings, designers outfits etc

The training here can run form 12 months to 24 months or even more depending on the goal to achieve.

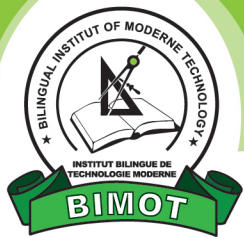
Employments opportunities in this sector are numerous but the most important issue here is that you become very creative designer in the clothing industry and other accessories.

Bilingual Institute of Modern Technology BIMOT



P.O. Box: 9496 Douala, Cameroon
Tel: +237 675527832 / 656380094
Website: <https://scopecameroon>

Tel: +237 675527832 / 656380094



Bilingual Institute of Modern Technology

MISSION STATEMENT

BIMOT is engaged in the pursuit of empowering our community by bringing out self-talents for professional excellence. It provides students with the quality opportunity for developing skills for life's vocation and becoming self-reliant.

LOCATION

Administrative office: Ancienne Route, Bonaberi Douala, opposite "BLING" Pressing

ADMISSION REQUIREMENTS

Bilingual institute of modern technology (BIMOT) is open to people who can read and write, a holder of FSLC, GCE O-levels and A-levels or any other certification depending on the career chosen.

REGISTRATION AND FEE

We have a non-refundable registration fee of **25 000frs** per student.

Tuition fee varies with departments and certifications required. The various trades specifications clearly spell this out.

Contact the Admission office for detailed information

DEPARTMENTS AND PROGRAMMES OFFERED



1. PLUMBING AND SANITARY INSTALLATIONS

These program prepares specialized technicians capable of handling every issue related to plumbing and sanitary fittings in a building.

The branches here include;

• Plumbing

Drain openers - Pipe insulation - Pipe fitting

• Sanitary fitting

Valves and Pumps - Clamps and Pipe size fittings - Tubing, Filters, strainers etc

At the end of studies here which can vary from 12 months to 24 months, one can become a professional plumber, a consultant, work with companies and homes etc.

2. PROFESSIONAL TILING



Trainees here must have received basic building construction knowledge to prepare them for the appropriate skills needed for professional tiling. The skills acquired in this domain will permit the trainees carry out with dexterity all types of tiling in all sorts of surfaces in homes and industries.

At the end of this course, trainees receive attestations or certifications that permit them to be hired for tiling jobs in any sector.

The duration of training here varies from 12 months to 24 months depending on the entry qualifications.

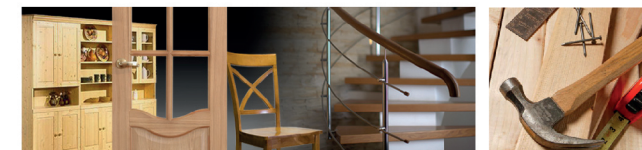
3. BUILDING AND CONSTRUCTION



This department is concerned with the transformation of wood into various structures. So much transformation can be done from wood. There is a broad specialization in this sector amongst which are;
Industrial carpentry - Roof rafting - Wood and joinery - Cabinets maker etc

At the end of the training in this specialty, which can run from 12 months to even up to 36 months, depending on the area of specialization, trainees acquire skills that permit them to specialize in the above fields. Skilled staff here are easily hired in the wood transformation industry and /or can be self employed in their own wood work transformation.

4. WOODWORK INDUSTRY



This department is concerned with the transformation of wood into various structures. So much transformation can be done from wood. There is a broad specialization in this sector amongst which are;
- Industrial carpentry
- Roof rafting
- Wood and joinery
- Cabinets maker etc

At the end of the training in this specialty, which can run from 12 months to even up to 36 months, depending on the area of specialization, trainees acquire skills that permit them to specialize in the above fields. Skilled staff here are easily hired in the wood transformation industry and /or can be self employed in their own wood work transformation